



## HEYSEN TRAIL MINIBUS SHUTTLE SERVICES ON THE FLEURIEU PENINSULA

**BOOKINGS ARE ESSENTIAL  
CONTACT US FOR CURRENT PRICES, QUOTES & AVAILABILITY**

**phone or SMS    0488 705 224**  
**email    [tbu@thebackyarduniverse.com.au](mailto:tbu@thebackyarduniverse.com.au)**  
**post    PO Box 235    Yankalilla    SA 5203**

We offer two types of shuttle service for Heyesen Trail walkers between Cape Jervis and Dashwood Gully (near Meadows):

- **Point to point.** You go to your walk finish location, our minibus meets you there and transfers you to your walk starting location. You then walk back to your finish location at your own pace. Prices vary according to which pairs of locations you want to use.
- **Accommodation to point / Point to accommodation.** Our minibus picks you up from your accommodation and transfers you to your walk starting location. At a prearranged time we meet you at your walk finishing location and return you to your accommodation. Prices vary according to which pairs of locations you want to use, and their distances from your accommodation. You can begin at one accommodation and finish at another. Our usual accommodation coverage includes the entire southern Fleurieu Peninsula, the Victor Harbor to Goolwa coast, the McLaren Vale wine region, Mt Compass & Kuitpo. Other accommodation locations, such as Adelaide city or airport, are available by arrangement.

You can begin your walk on one day and finish on another day. You can also do “single trip” if you have other transport arranged at either your starting or finishing locations. For example you're walking from your starting location to Cape Jervis and then travelling on a Kangaroo Island ferry.

**Our minibus carries 1 to 11 passengers per trip. All Heyesen Trail trips are charged as Flat Rate** – you pay the same price for 1 or 2 or 11 passengers. Our mobile payment system accepts Mastercard, Visa, American Express, and some smartphone payments. We also accept cash.

Copyright © The Backyard Universe Pty Ltd    ABN 66 611 133 263

[www.thebackyarduniverse.com.au](http://www.thebackyarduniverse.com.au)

phone 0488 705 224

[tbu@thebackyarduniverse.com.au](mailto:tbu@thebackyarduniverse.com.au)

Heyesen Trail minibus shuttle services

version 1.1    Jan 2020

If you're a small group we may combine your trip with another small group's trip to improve our travel efficiency and reduce our environmental impact.

We encourage walkers to spend at least half a day walking the Trail to properly appreciate the experience. Some location pairs are separated by less than three hours walking time, therefore we don't normally service such pairings. See the notes for each location.

This part of the Heysen Trail is entirely within the **Mt Lofty Ranges Fire Ban District**. Segments of the Heysen Trail that cross private land are officially closed to walkers during the Fire Danger season (normally early November to mid-April). Other segments along public roads, Conservation Parks, forests, nature & coastline reserves will also be closed on Total Fire Ban days. For your own safety we will not transport you onto an officially closed segment of the Trail. For more information on fire bans visit the Country Fire Service website [www.cfs.sa.gov.au](http://www.cfs.sa.gov.au) or phone 1800 362 361.

The Cape Jervis to Tapanappa segment is usually open all year, except on days of Total Fire Ban.

Our Heysen Trail pickup / drop off locations	WALKING distance from Cape Jervis (kilometres)
<b>Cape Jervis</b> ferry terminal	0
<b>Cobbler Hill</b> camp, in Deep Creek Conservation Park	13.0
<b>Trig</b> camp, in Deep Creek Conservation Park	20.0
<b>Tapanappa</b> camp, in Deep Creek Conservation Park	26.0
<b>Balquhiddie</b> (Callawonga Creek Rd)	39.7
<b>Balquhiddie camp</b> (new site on Mt Scrub Road)	42.5
<b>Waitpinga</b> camp, in Newland Head Conservation Park	53.5
<b>Kings Beach</b> car park, near Victor Harbor	64.5
<b>Newland Hill</b> camp (Range Rd / Waitpinga Rd), near Victor Harbor	68.0
<b>Tugwell Road</b> (Tugwell Rd / Halls Creek Rd), near Victor Harbor	69.5
<b>Robinson Hill</b> camp (Hancock Rd)	79.5
<b>Inman Valley</b> (Inman Valley Rd / James Track, western end of town)	84.2
<b>James Track</b> (between Inman Valley and Myponga)	88.5
<b>Causeway Road</b> (Causeway Rd / James Track), near Myponga	99.4
<b>Lawless Lane</b> (Lawless Lane / Hindmarsh Tiers Rd), near Myponga	106.5
<b>Cleland Gully Road</b> (Cleland Gully Rd / Wood Cone Rd / Victor Harbor Rd), near Mount Compass	121.3
<b>Mount Magnificent Road</b> (car park)	132.5

Copyright © The Backyard Universe Pty Ltd ABN 66 611 133 263

[www.thebackyarduniverse.com.au](http://www.thebackyarduniverse.com.au)

phone 0488 705 224

[tbu@thebackyarduniverse.com.au](mailto:tbu@thebackyarduniverse.com.au)

Heysen Trail minibus shuttle services

version 1.1 Jan 2020

<b>Woodgate Hill Road</b> , Kyeema Conservation Park	138.8
<b>Chookarloo</b> camp, Kuitpo Forest	149.0
<b>Dashwood Gully Road</b> (Wicks Rd / Dashwood Gully Rd), near Meadows	158.6

Detailed descriptions and GPS coordinates of each location are shown on the following pages, modified from published Heysen Trail guides and incorporating recent changes to the Trail.

Most of the **rivers and creeks** along this part of the Trail will dry up during the summer months. You should boil or sterilise or microfilter this water before drinking it or cooking with it. Water may also be available from public rainwater tanks at camping sites, but may run out before the end of summer.

**Camping sites** along the Trail and in nearby towns may be booked out during South Australian school holidays and public holiday weekends. See [www.schoolholidayssa.com.au](http://www.schoolholidayssa.com.au) for holiday dates. Most camping sites on the Trail have public toilets, but their toilet paper sometimes runs out.

**Mobile phone coverage** along this part of the Heysen Trail varies from excellent to non-existent. **Telstra** and **Optus** currently offer the best coverage in the region. **Vodafone** coverage is poor or non-existent outside of the larger towns. All three networks provide 4G services in the region. 3G is still available but is planned to be progressively shut down during the next few years. 5G service doesn't exist here.

**Emergency phone calls to 000** (police / fire / ambulance) will connect to whichever mobile network (Telstra, Optus, Vodafone) has the best signal at the location, regardless of your provider. *You need enough signal at your location for a voice call – SMS or texting to 000 does not work.* Calls to 000 will also work if your mobile has no remaining credit, no active account, or is missing its SIM card. Australian mobile phones can also call 000 even if their screen is locked (look for "Emergency Call" on screen).

International mobile phones that use 112 as their emergency call number will be automatically forwarded to 000 within Australia; using whichever mobile network has the best signal at the location. Dialling 112 doesn't route your call through a satellite unless you're using an actual satellite phone.

If you're using a US mobile phone in an emergency, remember that calling 911 does not work in Australia! Dial 000.

If you need help but it's not a life-threatening emergency, try calling either 131 44 (police assistance) or 132 500 (state emergency services & rescue). If you're having car trouble call the RAA on 131 111 for roadside assistance.

The **Handy GPS** app is available for both iPhone & Android and provides the equivalent of a basic handheld GPS unit; including your current location, waypoints, track logs and geo-tagged photos. Switching your phone to flight/aeroplane mode will extend the phone's battery life in places with no mobile phone coverage, and still allows its camera & GPS to work.

## Regional location map 1; Cape Jervis ferry terminal to Balquhiddie camp.



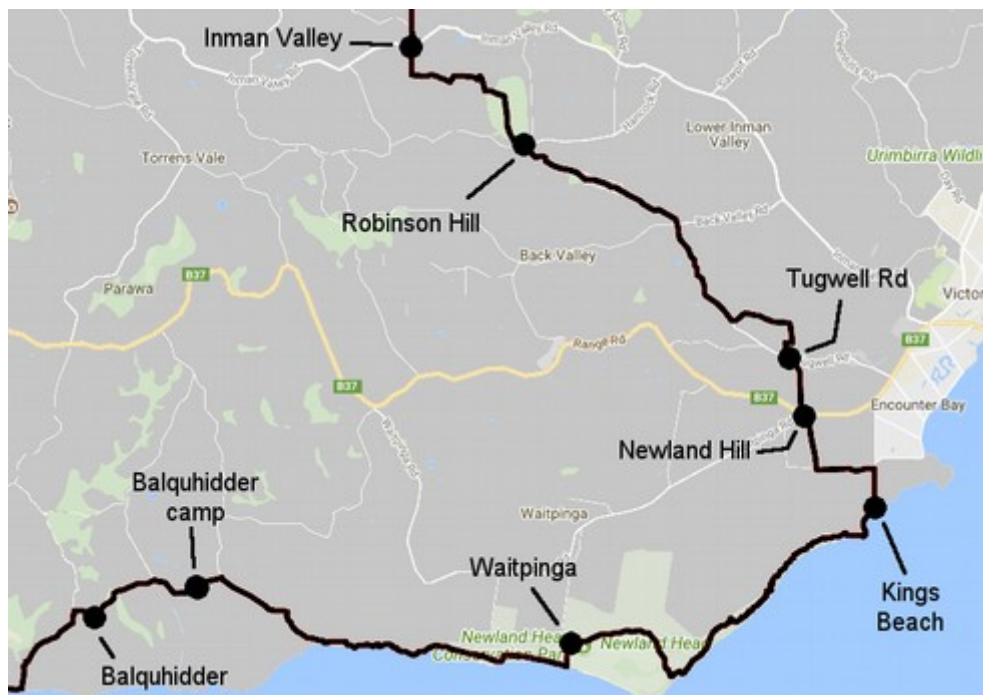
*Telstra & Optus* mobile phone coverage along this part of the Trail is marginal to non-existent, except near Cape Jervis and on Cobbler Hill. You might also get text message coverage from high ground near Tapanappa or Balquhiddie, but it is not reliable.

*Vodafone* coverage is non-existent except at Cape Jervis; where it is unreliable.

Cape Jervis to Tapanappa is usually open to walkers all year, except on days of Total Fire Ban. The 10km between Cape Jervis and Blowhole Beach is relatively easy. The next 16km through the Deep Creek Conservation Park goes over several ridges and valleys.



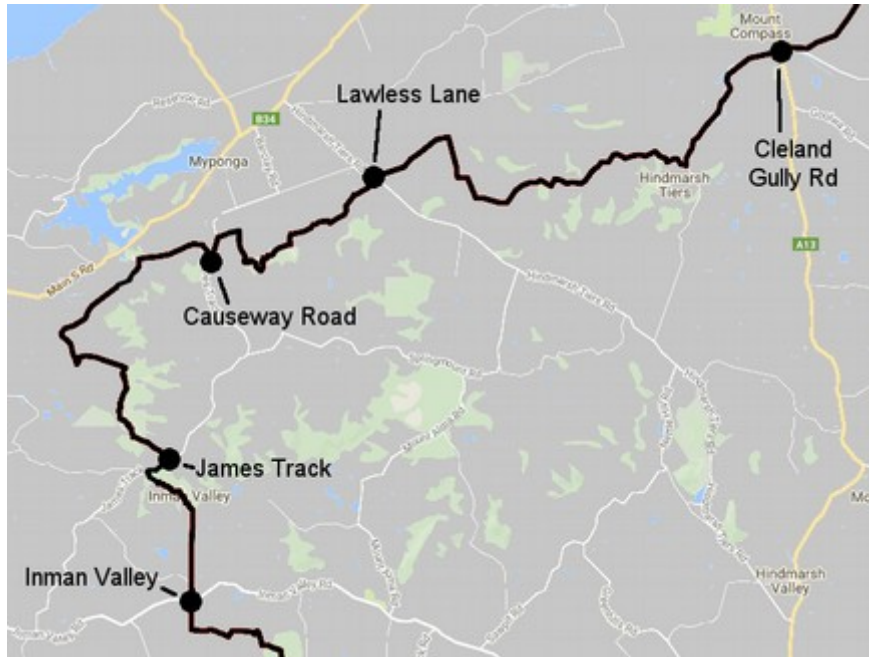
## Regional location map 2; Balquhiddier camp to Inman Valley.



*Telstra & Optus* mobile phone coverage west of Waitpinga is poor to non-existent, and has some dead spots between Waitpinga and Kings Beach. *Vodafone* coverage west of Waitpinga is non-existent, and unreliable between Waitpinga and Kings Beach. Coverage for all networks rapidly improves north of Kings Beach.

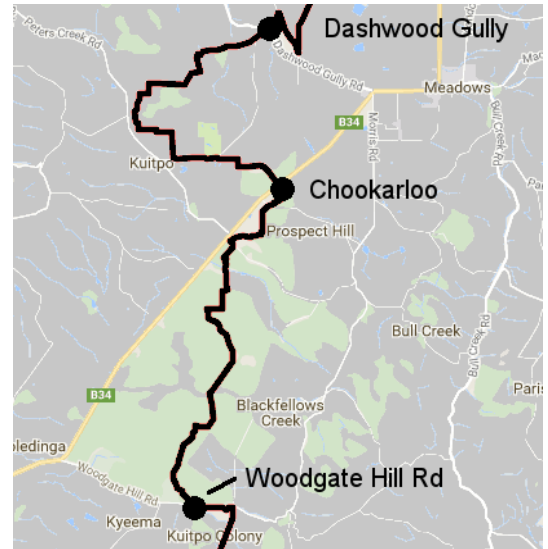
Kings Beach is also the western end of the *Victor Harbor Heritage Trail*, an easy 2km walk along the coast towards Victor Harbor. This in turn links onto the *Encounter Bikeway*, a 32km walking + bicycle trail through Victor Harbor and along the coast to Goolwa.

### Regional location map 3; Inman Valley to Cleland Gully Rd.



Mobile phone coverage on this part of the Trail is good.

## Regional location maps 4 & 5; Cleland Gully Rd to Dashwood Gully.



Mobile phone coverage on this part of the Trail is generally good, except in the deep valleys around Mt Magnificent.

The **Cape Jervis ferry docks** are at the end of the main road (B23) from Yankalilla & Adelaide. The large building by the harbour is the *Sealink* ferry terminal, and includes a cafe. The *KI Connect* ferry docks on the other side of the harbour but uses an office at the *Cape Jervis Caravan Park* & cafe, about 5 minutes drive away. The *Cape Jervis Tavern* is about 15 minutes walk away.

Car parking near the harbour is time-limited and can get very busy, especially on long weekends and school holidays. There is free parking available to the north of the lighthouse, but cars left here overnight may be tampered with. Sealink offers overnight/multi-day paid parking in a locked area near their building. Supervised parking is also available at the Caravan Park and the Tavern.

Unattended vehicles parked in the ferry waiting areas may be towed away.

The Heysen Trail begins between the Sealink building and the public toilets, heading south along the coast here.

Telstra & Optus mobile phone coverage is good around Cape Jervis. Vodafone coverage is non-existent to unreliable.

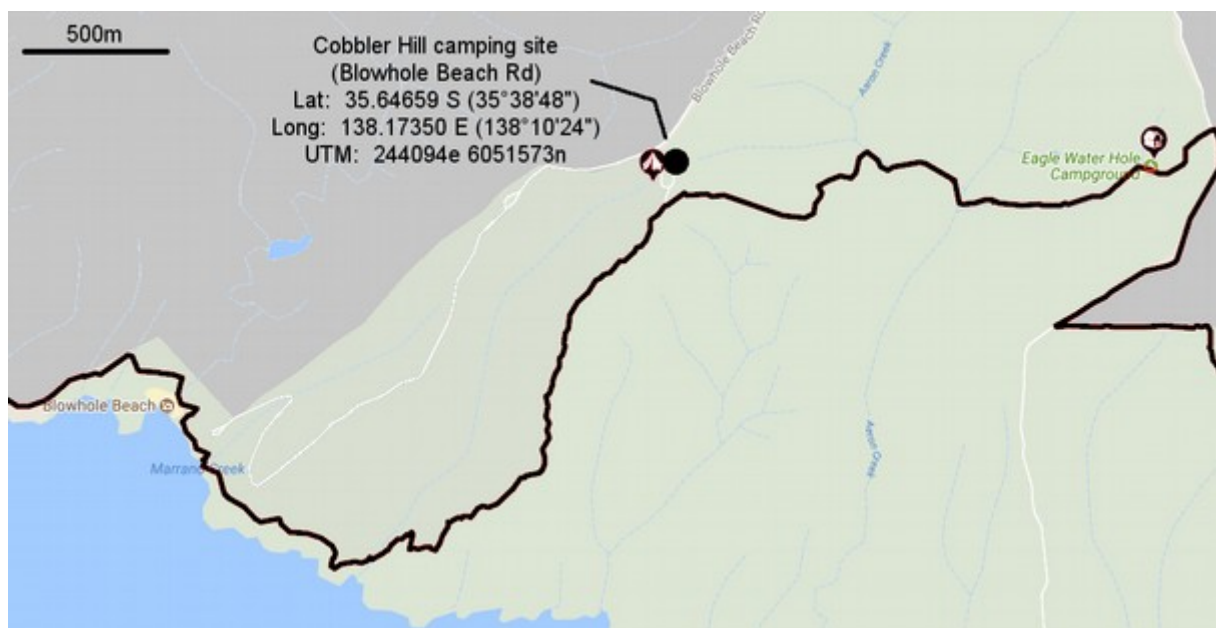




**Cobbler Hill** camping site. Near the end of Blowhole Beach Road, about 150 metres north of the Heysen Trail. Parking available along road side by camp entrance. Public toilet. Telstra & Optus mobile phone coverage here. *Inside Deep Creek Conservation Park*. Fees are charged for vehicle entry and for overnight camping. Camp sites in Deep Creek need to be booked in advance – pay at the Fleurieu Visitor Information Centre, the Delamere General Store, or online: [www.parks.sa.gov.au](http://www.parks.sa.gov.au) The Eagle Waterhole camp is not open to vehicles.

2 wheel drive vehicles using the 4 wheel drive track down to Blowhole Beach may be fined for disobeying the *4WD-only* warning signs. They may also need a 4 wheel drive tow truck to get them back up the hill – and there is no mobile phone coverage at the Beach car park.

The walk from Cobbler Hill to Cape Jervis is mostly easy gradients after the descent to Blowhole Beach, and is about a half day walk for beginners.



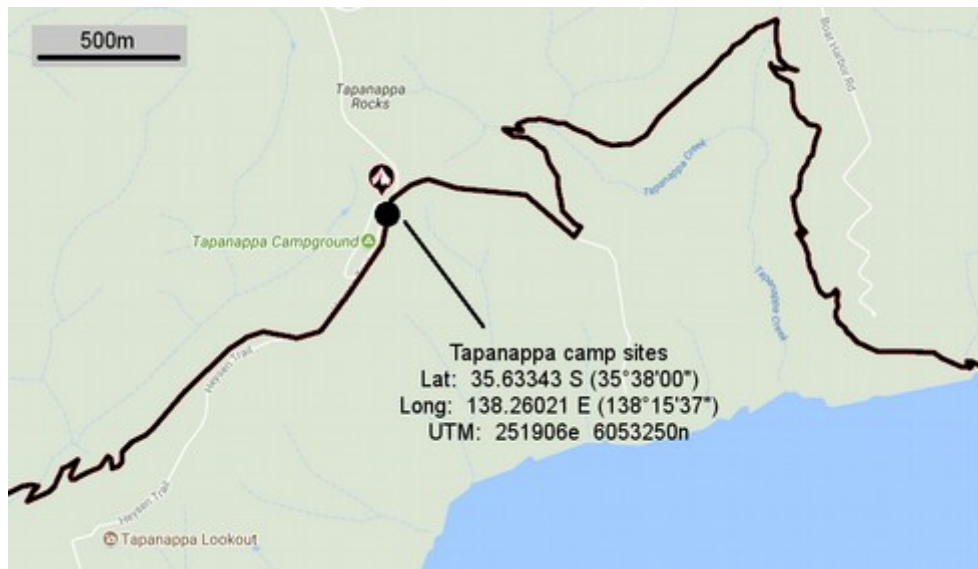
**Trig** camp sites. A large camping area at the end of Tent Rock Road. The Heysen Trail passes through its northern end, which is our pickup location here. Public toilets. Parking available along some road sides. **No mobile phone coverage.** *Inside Deep Creek Conservation Park.* Fees are charged for vehicle entry and for overnight camping. Camp sites in Deep Creek need to be booked in advance – pay at the Fleurieu Visitor Information Centre, the Delamere General Store, or online: [www.parks.sa.gov.au](http://www.parks.sa.gov.au)





**Tapanappa** camp sites. A small camping area near the end of the Tapanappa lookout track. Parking available along road side. **No mobile phone coverage.** *Inside Deep Creek Conservation Park.* Fees are charged for vehicle entry and for overnight camping. Camp sites in Deep Creek need to be booked in advance – pay at the Fleurieu Visitor Information Centre, the Delamere General Store, or online: [www.parks.sa.gov.au](http://www.parks.sa.gov.au)

The walk from here to Cape Jervis, or from here to Balquhiddie camp, is a full day walk for experienced walkers. The 4km of beach between here and Balquhiddie can get very soft and boggy after storms.



Copyright © The Backyard Universe Pty Ltd ABN 66 611 133 263

[www.thebackyarduniverse.com.au](http://www.thebackyarduniverse.com.au)

phone 0488 705 224

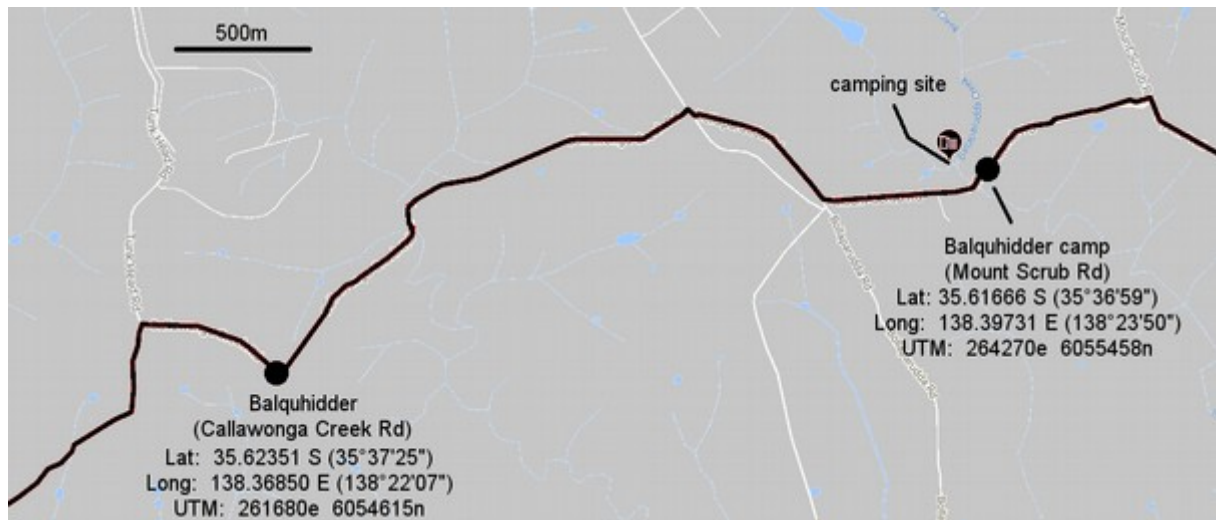
[tbu@thebackyarduniverse.com.au](mailto:tbu@thebackyarduniverse.com.au)

Heysen Trail minibus shuttle services

version 1.1 Jan 2020

**Balquhiddier** and **Balquhiddier camp** site. The latter is a new camp site off the road, accessed by a walker's stile over the roadside fence. **No mobile phone coverage.** Parking available along road sides at both locations, but beware of soft road edges and large stones. Also do not obstruct farm gates. Best access route for both locations is via Bollaparudda Road, starting by the Parawa Uniting Church. We do not normally offer transfers directly between these two locations.

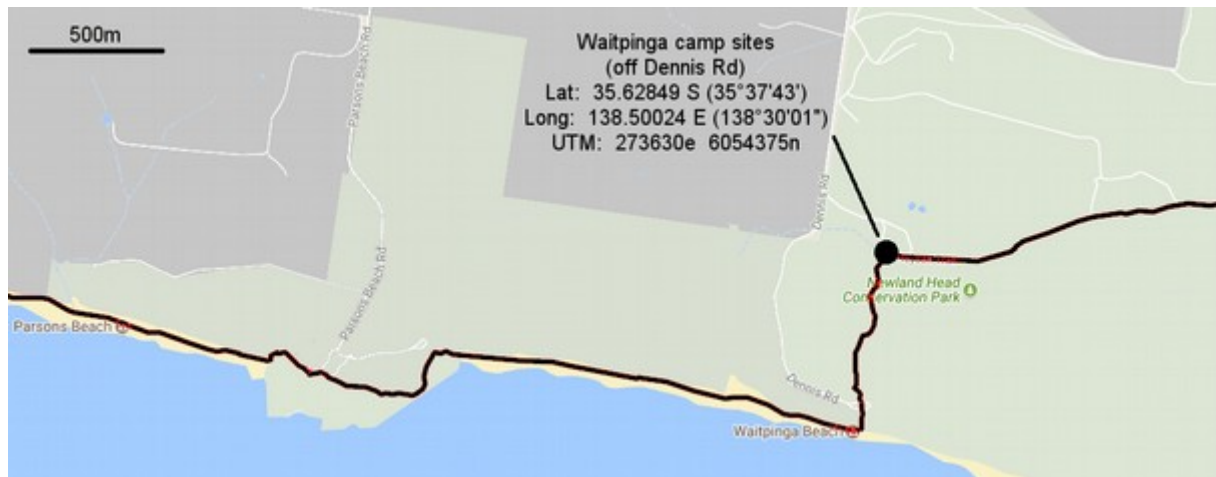
The beaches between Tapanappa & Balquhiddier, and between Balquhiddier camp & Waitpinga, can get very soft after storms.





**Waitpinga** camp sites. *Inside Newland Head Conservation Park.* Parking bays are available along the driveway from Dennis Road into the camp area. Public toilets in the camp area. Vehicle entry & parking is free, but a fee is charged for overnight camping and sites need to be booked in advance. Pay online at: [www.parks.sa.gov.au](http://www.parks.sa.gov.au) There are additional car parks at Waitpinga beach.

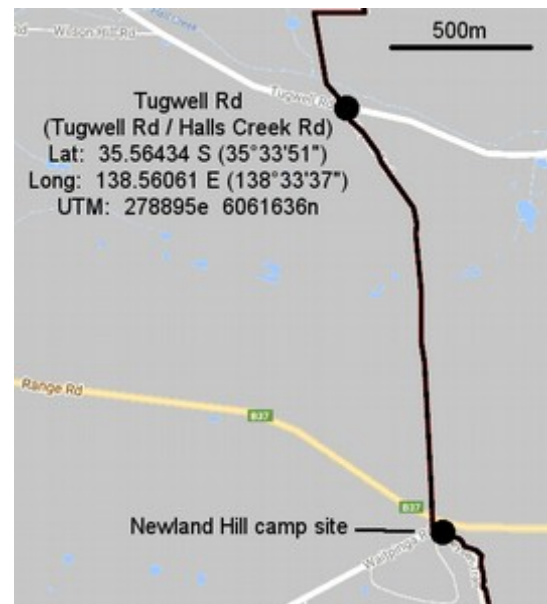
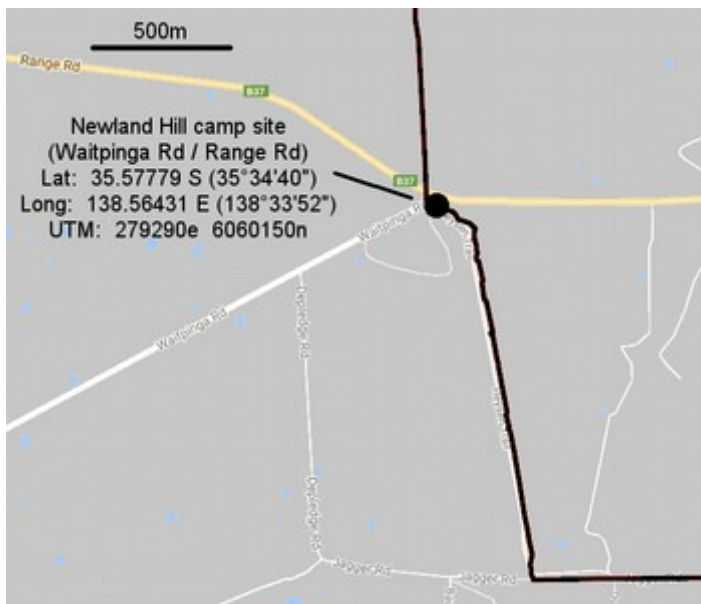
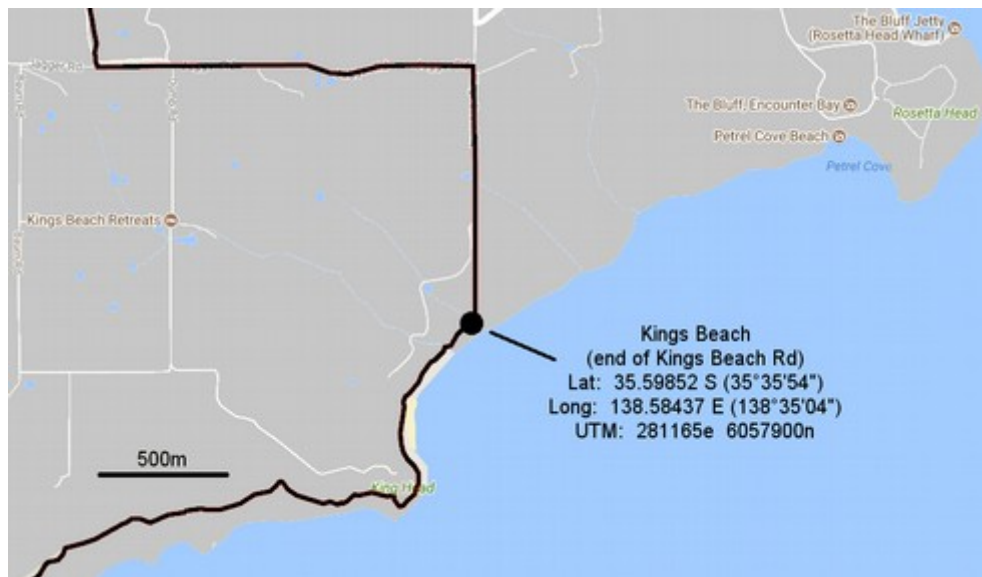
The beaches between Balquhider camp and here can get very soft after storms.



**Kings Beach / Newland Hill / Tugwell Rd** are all about 7km walking distance from the centre of the large town of Victor Harbor. We do not normally offer transfers directly between these three locations; but we can transfer between any of these points to/from Victor Harbor or elsewhere. Victor Harbor also has local taxi & bus services.

Mobile phone coverage at King's Beach is non-existent to unreliable, but improves inland along Kings Beach Road, and eastwards along the coast.

Kings Beach is also the western end of the *Victor Harbor Heritage Trail* , an easy 2km walk along the coast towards Victor Harbor. This in turn links onto the *Encounter Bikeway*, a 32km walking + bicycle trail through Victor Harbor and along the coast to Goolwa.





Kings Beach has lots of roadside parking.



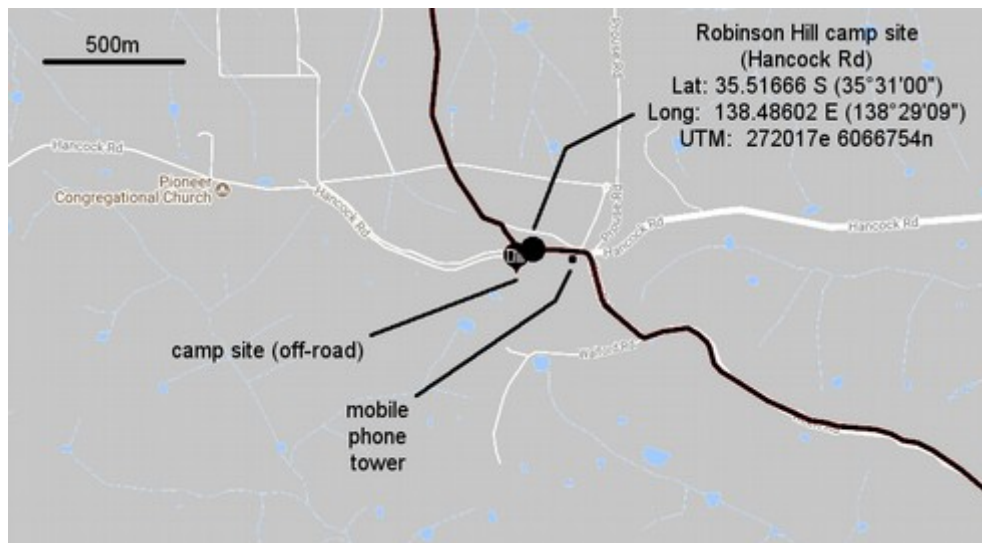
Newland Hill has limited roadside parking at our pickup/dropoff location (intersection of Waitpinga Road / Range Road), and the camp site is about 150 metres southeast (between the quarry and the road). Unattended vehicles obstructing the quarry's entrance here may be towed away.



Tugwell Road has very limited roadside parking but it is more secluded.



**Robinson Hill** (between the towns of Victor Harbor and Inman Valley) has very limited roadside parking near the camp. Our pickup location is the Forest Reserve entrance, across the road from the camp. Beware of soft road edges along nearby Prouse Road and Keen Road, if parking there.



Copyright © The Backyard Universe Pty Ltd ABN 66 611 133 263

[www.thebackyarduniverse.com.au](http://www.thebackyarduniverse.com.au)

phone 0488 705 224

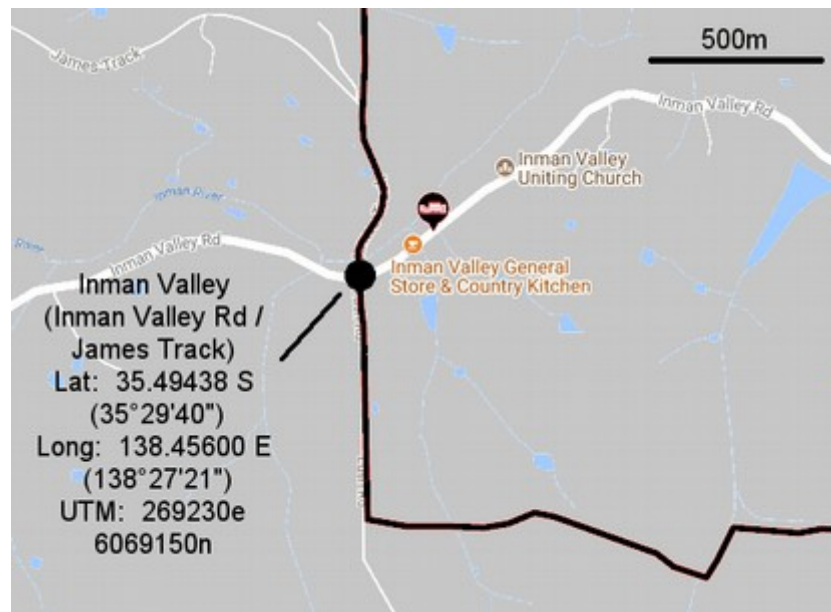
[tbu@thebackyarduniverse.com.au](mailto:tbu@thebackyarduniverse.com.au)

Heysen Trail minibus shuttle services

version 1.1 Jan 2020



**Inman Valley** is a small town with a general store & cafe, and public toilets, on the main road between Yankalilla and Victor Harbor. The Trail goes through the west end of the town. Roadside parking is available just north of the bridge on James Track.



Copyright © The Backyard Universe Pty Ltd ABN 66 611 133 263

[www.thebackyarduniverse.com.au](http://www.thebackyarduniverse.com.au)

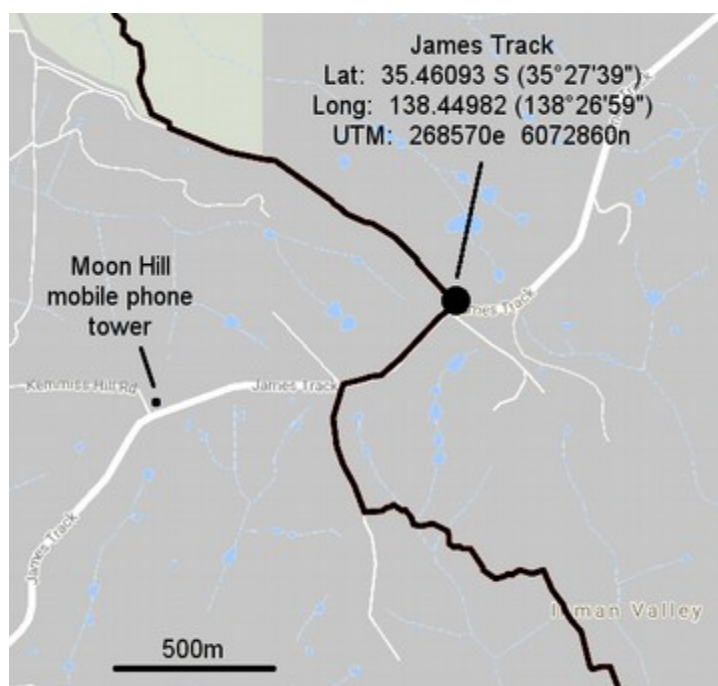
phone 0488 705 224

[tbu@thebackyarduniverse.com.au](mailto:tbu@thebackyarduniverse.com.au)

Heysen Trail minibus shuttle services

version 1.1 Jan 2020

**James Track** has roadside parking at this location (between the small towns of Myponga and Inman Valley). Do not block gates or driveways.



Copyright © The Backyard Universe Pty Ltd ABN 66 611 133 263

[www.thebackyarduniverse.com.au](http://www.thebackyarduniverse.com.au)

phone 0488 705 224

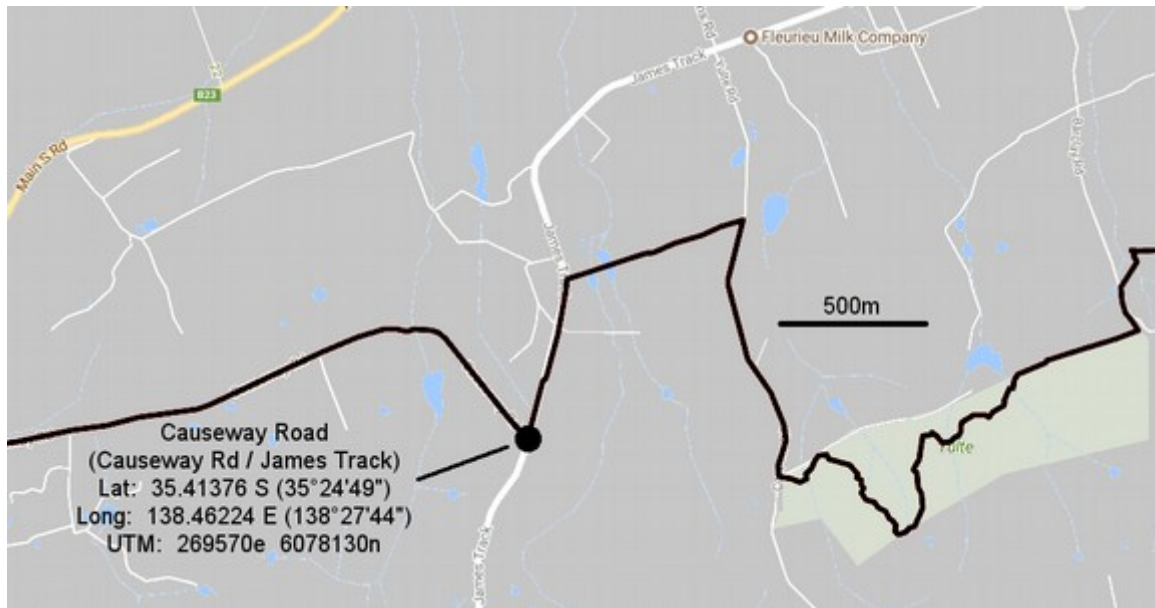
[tbu@thebackyarduniverse.com.au](mailto:tbu@thebackyarduniverse.com.au)

Heysen Trail minibus shuttle services

version 1.1 Jan 2020



The **Causeway Road** location (near the town of Myponga) has some roadside parking near the intersection with James Track. Despite their names, the Track is bitumen here and the Road is unsealed.



Note: we don't use the official Yulte Road location (about 1km from here) because there's no safe place to stop our minibus – or any vehicle – anywhere nearby. There's also nowhere nearby to turn our minibus around.

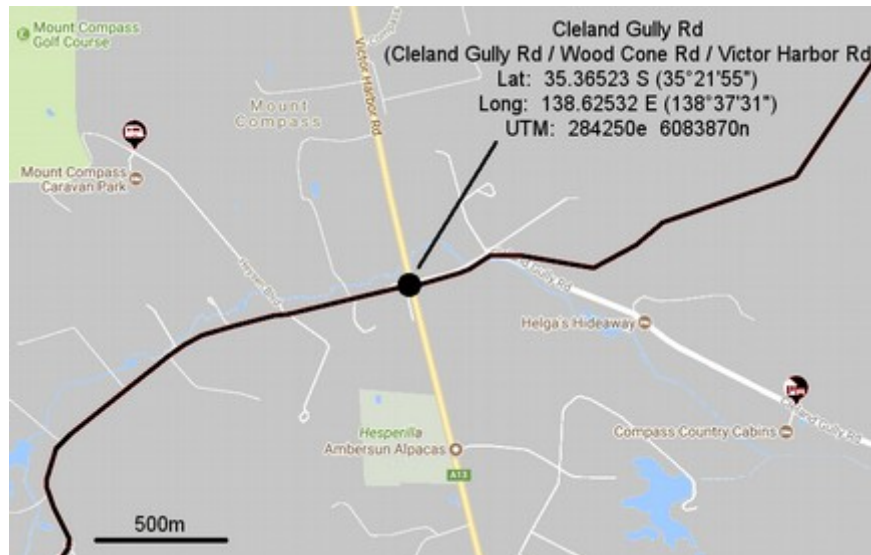
**Lawless Lane** (near the town of Myponga) has limited roadside parking to the east of its intersection with Hindmarsh Tiers Road. Beware of ditches and soft roadside edges, and if it's rained recently also beware of slippery road surfaces here.

Note – the old Mount Cone camp site, between here and Cleland Gully Road, has been closed to overnight campers.

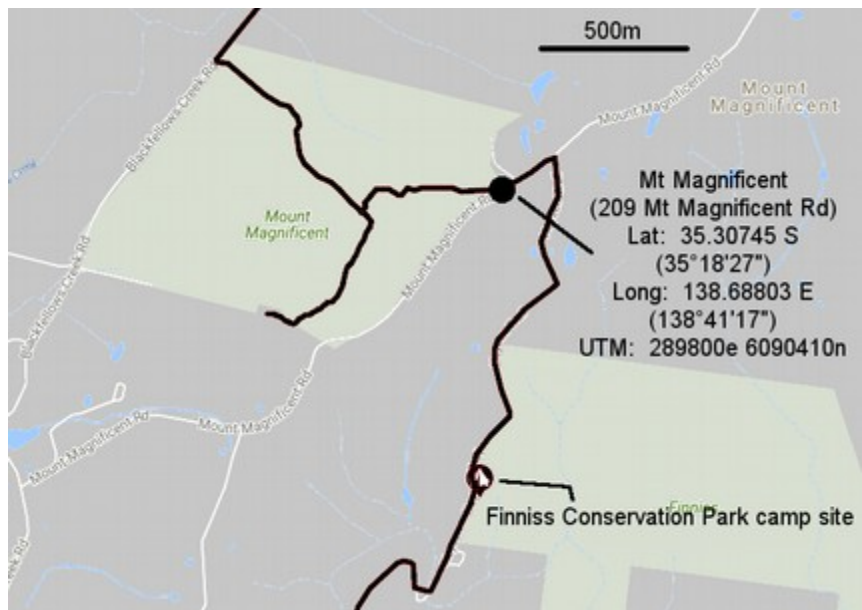




**Cleland Gully Road** (near the town of Mt Compass) has limited roadside parking. Plenty of roadside parking exists nearby on Wood Cone Road (on the other side of the Victor Harbor Road). We do not recommend roadside parking on the busy Victor Harbor Road.  
Note – the old Mount Cone campsite, between here and Lawless Lane, has been closed to overnight campers.



**Mount Magnificent Road** has a small car park at this location, for the Mount Magnificent and Finnis Conservation Parks. Do not block driveways or gates if you park on the roadside.



Copyright © The Backyard Universe Pty Ltd ABN 66 611 133 263

[www.thebackyarduniverse.com.au](http://www.thebackyarduniverse.com.au)

phone 0488 705 224

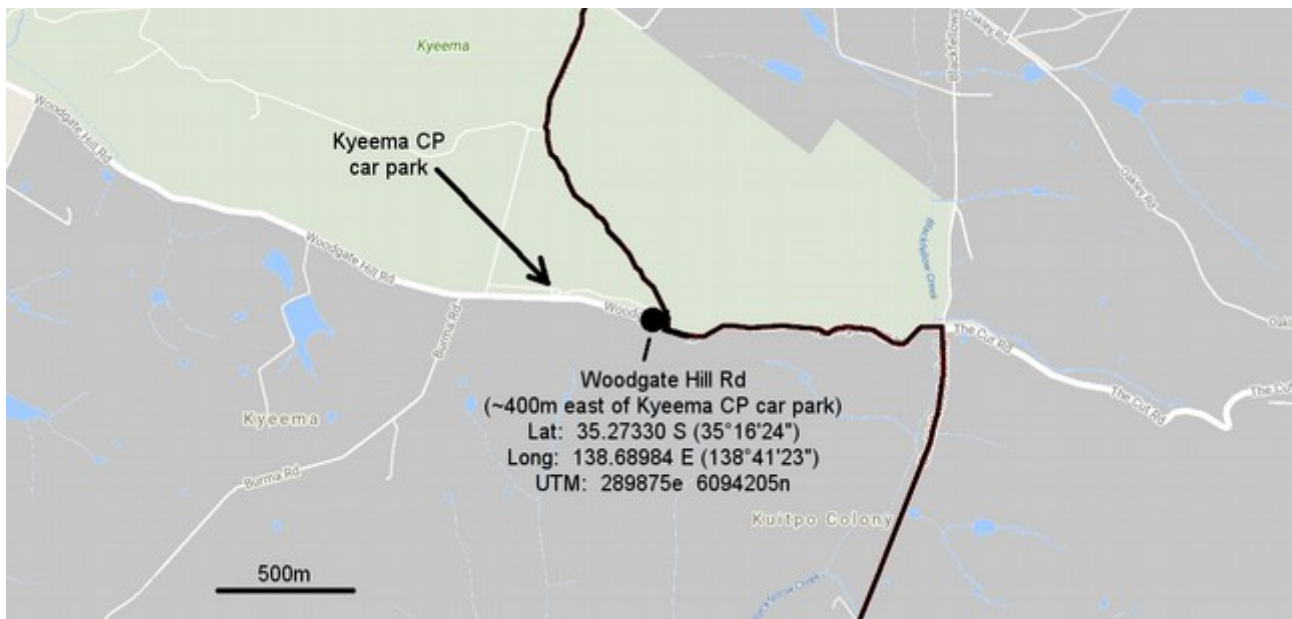
[tbu@thebackyarduniverse.com.au](mailto:tbu@thebackyarduniverse.com.au)

Heysen Trail minibus shuttle services

version 1.1 Jan 2020



The official **Woodgate Hill Road** location has no safe all-weather parking on the Trail. If you need to park use the nearby Kyeema Conservation Park car park.

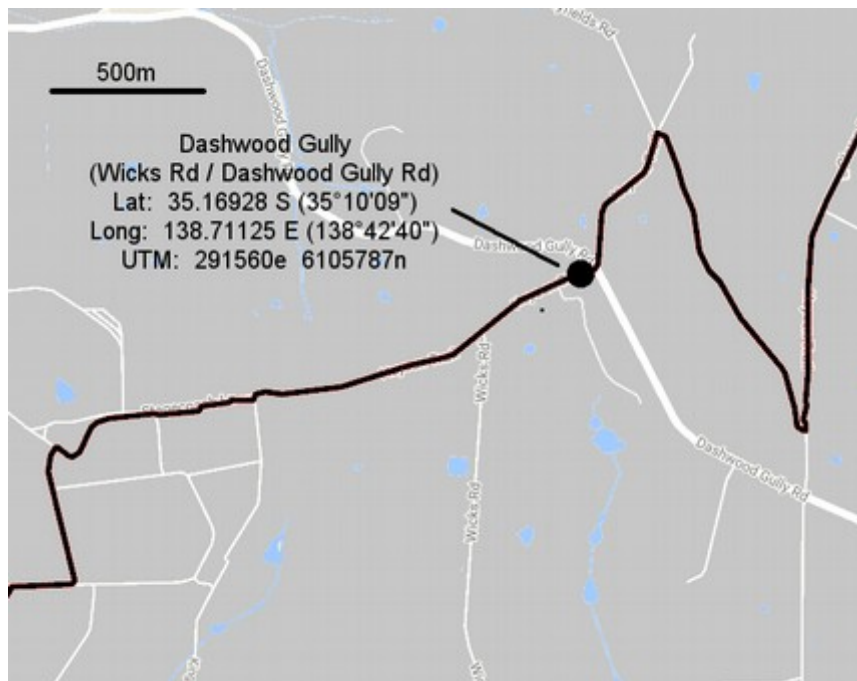


**Chookarloo** camp & picnic area is **inside Kuitpo Forest Reserve**. Public toilet. Parking is free for walkers & day visitors but Forestry SA charges a fee for overnight camping. No camping is allowed during Fire Danger season. Closed to the public on Total Fire Ban days, and (occasionally) during forest logging operations. The main entrance gate from Brookman Road is our pickup point, because the gate itself is sometimes locked after 4pm. Brookman Road is the main road through the Kuitpo Forest and has lots of roadside parking.





**Dashwood Gully Road** is the main road between the towns of Meadows and Kangarilla. Our pickup / dropoff location is the intersection with Wicks Road; 158.6km walk from Cape Jervis. Limited roadside parking here due to soft road edges, trees, and crash barriers.



The Adelaide hills suburb of Mylor is another 23km of Trail walking beyond this location. Mylor is serviced by Adelaide Metro public buses and by several Adelaide taxi companies.

Copyright © The Backyard Universe Pty Ltd ABN 66 611 133 263

[www.thebackyarduniverse.com.au](http://www.thebackyarduniverse.com.au)

phone 0488 705 224

[tbu@thebackyarduniverse.com.au](mailto:tbu@thebackyarduniverse.com.au)

Heysen Trail minibus shuttle services

version 1.1 Jan 2020